



Kumpulan Program Assembler (DEBUG & TASM)

DEBUG :

- Mencetak (ABC)

```
Mov ah,02  
Mov dl,41  
Int 21  
Inc dl  
Int 21  
Inc dl  
Int 21  
Int 20  
-g  
ABC
```

```
C:\>debug  
-a100  
0B12:0100 mov ah,02  
0B12:0102 mov dl,41  
0B12:0104 int 21  
0B12:0106 inc dl  
0B12:0108 int 21  
0B12:010A inc dl  
0B12:010C int 21  
0B12:010E int 20  
-g  
ABC  
Program terminated normally
```

- Mencetak (A B C) DenganSepasi

```
mov ah,02  
mov dl,41  
int 21  
push dx  
mov dl,20  
int 21  
pop dx  
inc dl  
int 21  
mov dl,20  
int 21  
mov dl,43  
int 21  
int 20  
-g  
A B C
```

```
Program terminated normally  
-a100  
0B12:0100 mov ah,02  
0B12:0102 mov dl,41  
0B12:0104 int 21  
0B12:0106 push dx  
0B12:0107 mov dl,20  
0B12:0109 int 21  
0B12:010B pop dx  
0B12:010C inc dl  
0B12:010E int 21  
0B12:0110 mov dl,20  
0B12:0112 int 21  
0B12:0114 mov dl,43  
0B12:0116 int 21  
0B12:0118 int 20  
0B12:011A  
-g  
A B C  
Program terminated normally
```

- Mencetak(CBA)

```
mov ah,02  
mov dl,43  
int 21  
dec dl  
int 21  
dec dl  
int 21  
int 20  
-g  
CBA
```

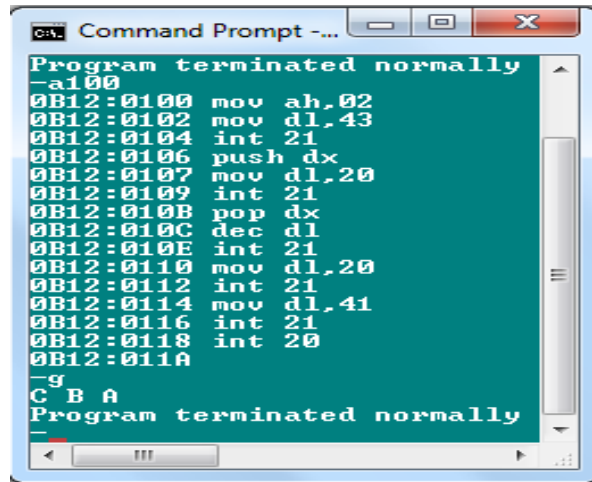
```
Program terminated normally  
-a100  
0B12:0100 mov ah,02  
0B12:0102 mov dl,43  
0B12:0104 int 21  
0B12:0106 dec dl  
0B12:0108 int 21  
0B12:010A dec dl  
0B12:010C int 21  
0B12:010E int 20  
0B12:0110  
-g  
CBA  
Program terminated normally
```



CBA

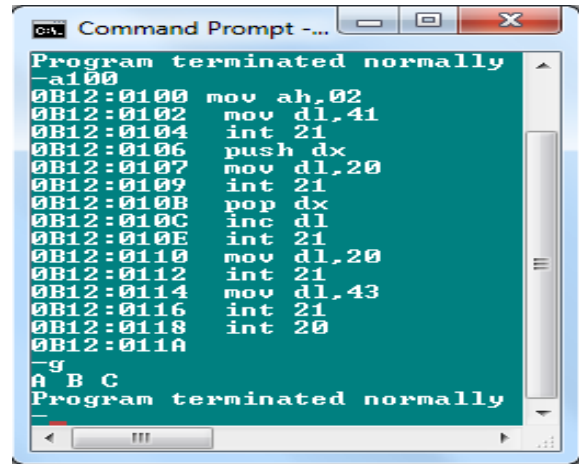
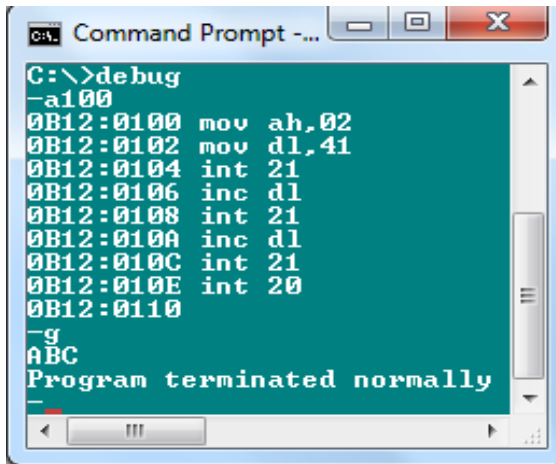
- Mencetak(CBA) DenganSepasi

```
mov ah,02
mov dl,43
int 21
push dx
mov dl,20
int 21
pop dx
dec dl
int 21
mov dl,20
int 21
mov dl,41
int 21
int 20
-g
C B A
```

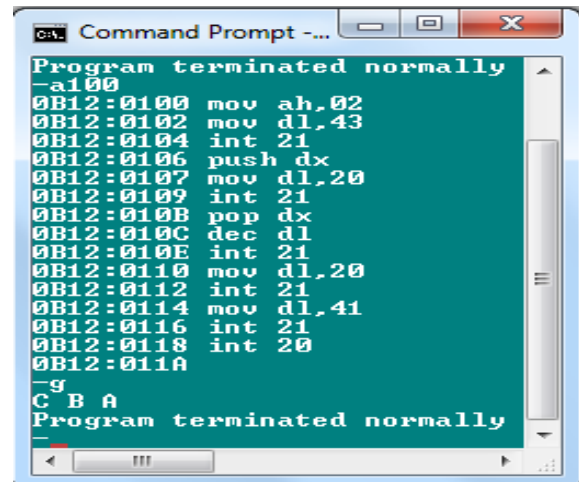
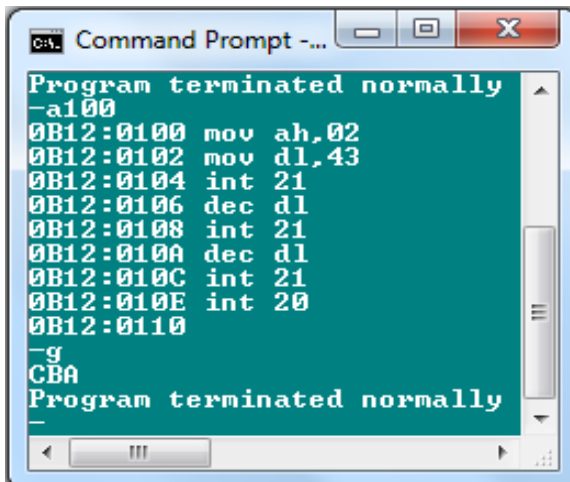


Mencetak Dengan ::

INC:(ABC) & (ABC)



DEC:(CBA) & (CBA)





ADD : (FAN) & (FAN)

```
Command Prompt - debug
C:\>debug
-a100
0B12:0100 mov ah,02
0B12:0102 mov dl,46
0B12:0104 int 21
0B12:0106 mov dl,dl
0B12:0108 sub dl,5
0B12:010B int 21
0B12:010D add dl,d
0B12:0110 int 21
0B12:0112 int 20
0B12:0114
-g
FAN
Program terminated normally
```

```
Command Prompt - debug
Program terminated normally
-a100
0B12:0100 mov ah,02
0B12:0102 mov dl,46
0B12:0104 int 21
0B12:0106 mov bl,dl
0B12:0108 mov dl,20
0B12:010A int 21
0B12:010C mov dl,b1
0B12:010E sub dl,5
0B12:0111 int 21
0B12:0113 mov bl,dl
0B12:0115 mov dl,20
0B12:0117 int 21
0B12:0119 mov dl,b1
0B12:011B add dl,d
0B12:011E int 21
0B12:0120 int 20
0B12:0122
-g
F A N
Program terminated normally
```

SUB : (NAF) & (NAF)

```
Command Prompt - debug
Program terminated normally
-a100
0B12:0100 mov ah,02
0B12:0102 mov dl,4e
0B12:0104 int 21
0B12:0106 mov dl,dl
0B12:0108 sub dl,d
0B12:010B int 21
0B12:010D add dl,5
0B12:0110 int 21
0B12:0112 int 20
0B12:0114
-g
NAF
Program terminated normally
```

```
Command Prompt - debug
Program terminated normally
-a100
0B12:0100 mov ah,02
0B12:0102 mov dl,4e
0B12:0104 int 21
0B12:0106 mov bl,dl
0B12:0108 mov dl,20
0B12:010A int 21
0B12:010C mov dl,b1
0B12:010E sub dl,d
0B12:0111 int 21
0B12:0113 mov bl,dl
0B12:0115 mov dl,20
0B12:0117 int 21
0B12:0119 mov dl,b1
0B12:011B add dl,5
0B12:011E int 21
0B12:0120 int 20
0B12:0122
-g
N A F
Program terminated normally
```

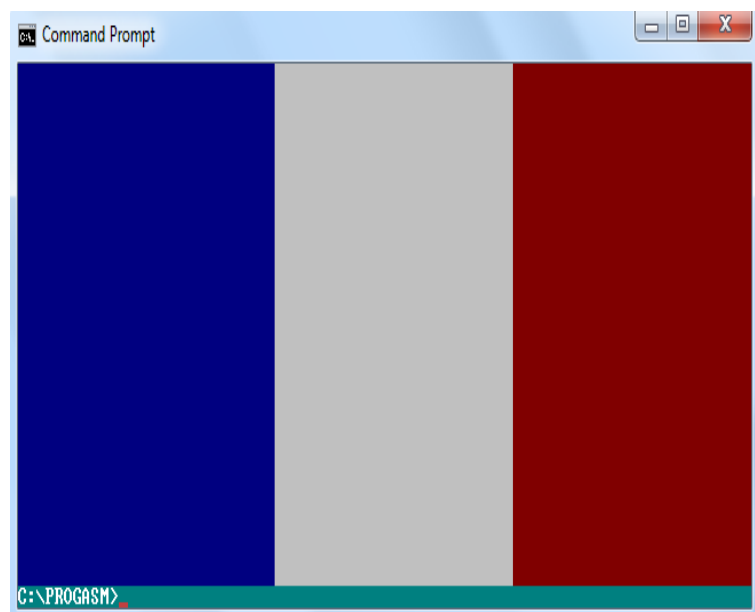



TASM:

```
mp.asm - Notepad
File Edit Format View Help
.model small;
.code;
org 100h
h:
  Mov ah,06h
  Mov ch,00
  Mov dh,12
  Mov cl,00
  Mov dl,80
  Mov bh,40h
  int 10h
  Mov ah,06h
  Mov ch,13
  Mov dh,24
  Mov cl,00
  Mov dl,80h
  Mov bh,70h
  Int 10h
  Int 20h
end h;
```

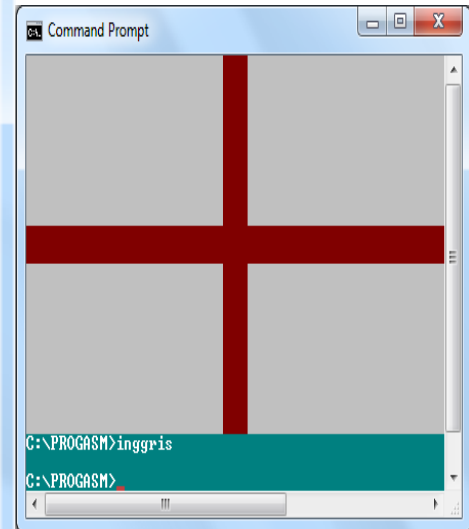


```
prancis.asm - Notepad
File Edit Format View Help
.model small;
.code;
org 100h
h:
  Mov ah,06h
  Mov ch,00
  Mov dh,80
  Mov cl,00
  Mov dl,27
  Mov bh,10h
  Int 10h
  Mov ah,06h
  Mov ch,00
  Mov dh,80
  Mov cl,28
  Mov dl,54
  Mov bh,70h
  Int 10h
  Mov ah,06h
  Mov ch,00
  Mov dh,80
  Mov cl,54
  Mov dl,80
  Mov bh,40h
  Int 10h
  Int 20h
end h;
```





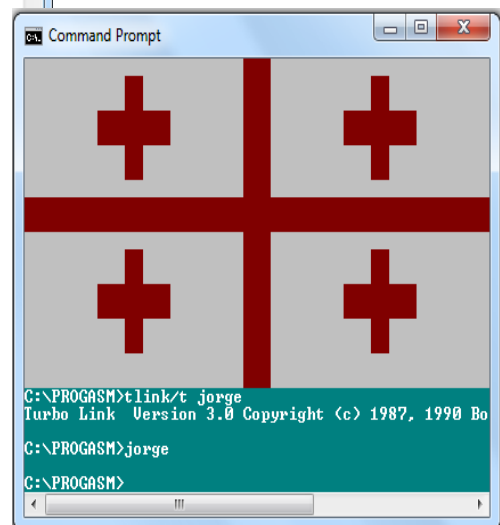
```
inggris.asm - Notepad
File Edit Format View Help
.model small;
.code;
.org 100h
h:
  Mov ah,06h
  Mov ch,00
  Mov dh,19
  Mov cl,00
  Mov dl,50
  Mov bh,70h
  int 10h
  Mov ch,09
  Mov dh,10
  Mov cl,00
  Mov dl,50
  Mov bh,40h
  int 10h
  Mov ch,00
  Mov dh,19
  Mov cl,24
  Mov dl,26
  Mov bh,40h
  int 10h
  int 20h
End h;
```



```
Jorge.asm - Notepad
File Edit Format View Help
.model small;
.code;
.org 100h
h:
  Mov ah,06h
  Mov ch,00
  Mov dh,19
  Mov cl,00
  Mov dl,50
  Mov bh,70h
  int 10h
  Mov ch,09
  Mov dh,10
  Mov cl,00
  Mov dl,50
  Mov bh,40h
  int 10h
  Mov ch,00
  Mov dh,19
  Mov cl,24
  Mov dl,26
  Mov bh,40h
  int 10h
  Mov ch,04
  Mov dh,05
  Mov cl,08
  Mov dl,15
  Mov bh,40h
  int 10h
  Mov ch,02
  Mov dh,07
  Mov cl,11
  Mov dl,12
```

```
  Mov dl,12
  Mov bh,40h
int 10h
  Mov ch,04
  Mov dh,05
  Mov cl,35
  Mov dl,42
  Mov bh,40h
int 10h
  Mov ch,02
  Mov dh,07
  Mov cl,38
  Mov dl,39
  Mov bh,40h
  int 10h
  Mov ch,14
  Mov dh,15
  Mov cl,08
  Mov dl,15
  Mov bh,40h
  int 10h
  Mov ch,12
  Mov dh,17
  Mov cl,11
  Mov dl,12
  Mov bh,40h
Int 10h
  Mov ch,14
  Mov dh,15
  Mov cl,35
  Mov dl,42
  Mov bh,40h
  int 10h
```

```
  int 10h
  Mov ch,12
  Mov dh,17
  Mov cl,38
  Mov dl,39
  Mov bh,40h
  int 10h
  int 20h
end h;
```





```
YNNIasm ...
File Edit Format View
Help
.Model small;
.code;
org 100h;
h:
    mov ah,06h;
    mov ch,00;
    mov dh,18;
    mov cl,00;
    mov dl,40;
    mov bh,10h;
    int 10h;

mov ch,05;
mov dh,06;
mov cl,00;
mov dl,13;
mov bh,70h;
int 10h;

    mov ch,00;
    mov dh,10;
    mov cl,05;
    mov dl,07;
    mov bh,70h;
    int 10h;

mov ch,03;
mov dh,04;
mov cl,14;
mov dl,40;
mov bh,70h;
int 10h;

    mov ch,07;
    mov dh,08;
    mov cl,14;
    mov dl,40;
    mov bh,70h;
    int 10h;

mov ch,11;
mov dh,12;
mov cl,00;
mov dl,40;
mov bh,70h;
int 10h;

    mov ch,15;
    mov dh,16;
    mov cl,00;
    mov dl,40;
    mov bh,70h;
    int 10h;
    int 20h;

end h;
```

